



GAT MONTHLY MEMBERSHIP PROGRESS REPORT

Results as of: 5/31/2026

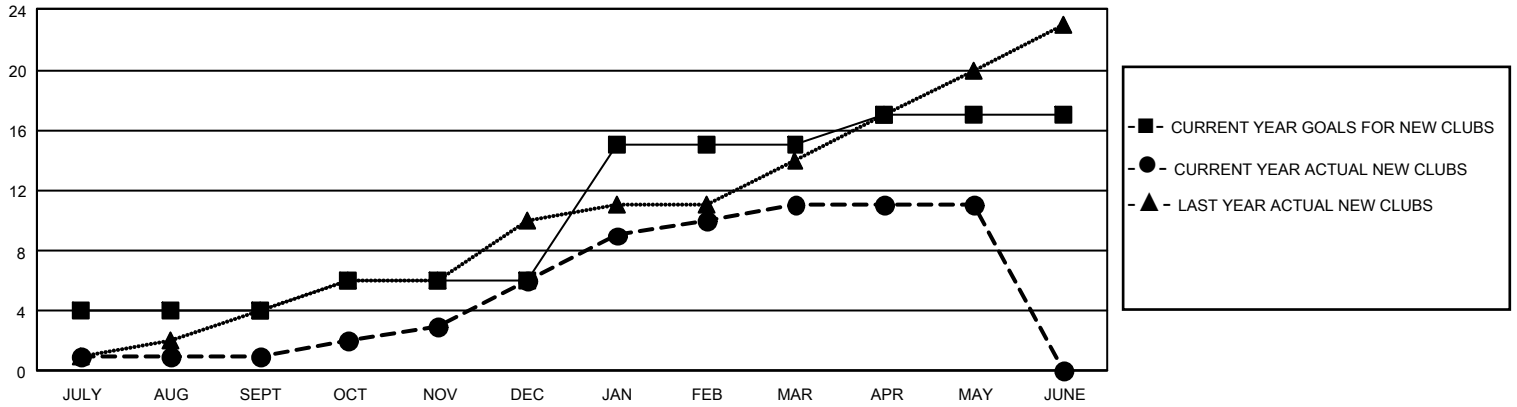
GMT Constitutional Area 3, Group E

REPORT DOES NOT INCLUDE CLUBS IN UNDISTRICTED AREAS.

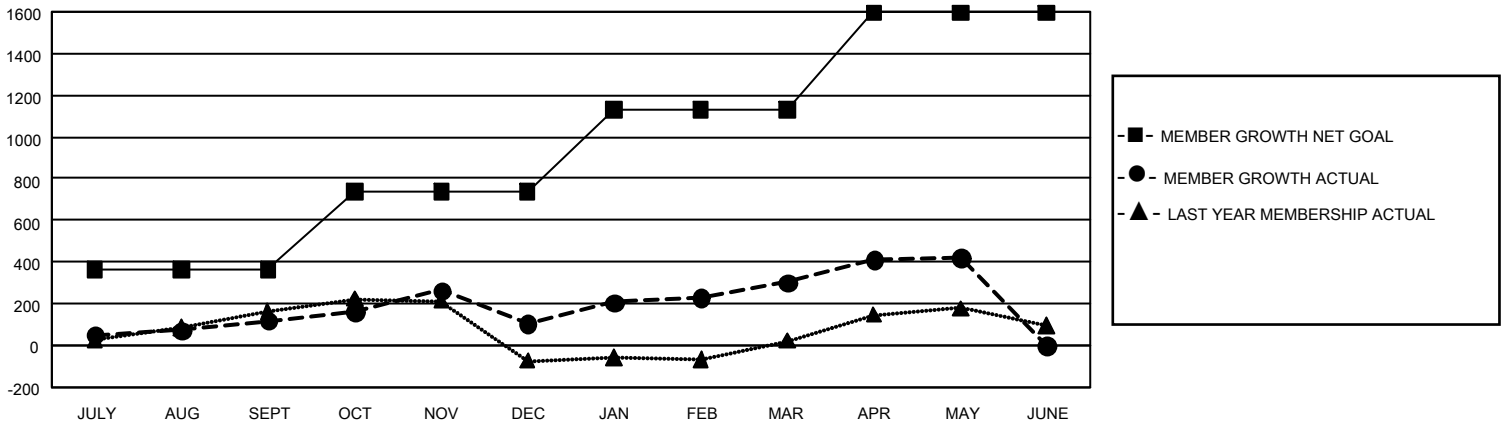
Clubs			
RESULTS FOR 2025-2026			
QUARTER	NEW CLUB GOAL	NEW CLUBS	DROPPED CLUBS
JULY/AUG/SEPT	12	1	2
OCT/NOV/DEC	6	5	1
JAN/FEB/MAR	27	5	0
APR/MAY/JUNE	6	0	0

Members			
RESULTS FOR 2025-2026			
QUARTER	MEMBER GROWTH NET GOAL	MEMBER GROWTH ACTUAL	DROPPED MEMBERS ACTUAL (including transfers)
JULY/AUG/SEPT	365	329	191
OCT/NOV/DEC	371	441	444
JAN/FEB/MAR	395	311	102
APR/MAY/JUNE	465	306	171

GOALS AND ACTUAL NEW CLUBS CUMULATIVE



GOALS AND ACTUAL MEMBERS CUMULATIVE



DROPPED CLUBS: 3	214 CLUBS OF 361 ADDED 1 OR MORE NEW MEMBERS	<u>GENDER DISTRIBUTION</u>	
<u>DROPPED MEMBERS</u>		MALE	3,543 (44.39%)
DECEASED	56	FEMALE	4,433 (55.54%)
CLUB CANCELLED	26	NON BINARY	2 (0.03%)
OTHER	817	PREFER NOT TO ANSWER	4 (0.05%)
TOTAL	899	TOTAL FAMILY UNIT MEMBERS	2,608
	CLICK HERE FOR CUMULATIVE MEMBERSHIP DATA	FAMILY MEMBERS PAYING HALF DUES	1,519